

UPGRADE
NOW!

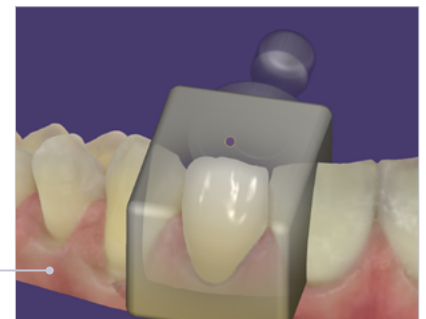
DentalCAD 3.2 Elefsina Feature Release

**NEW AI SERVICES
AVAILABLE!**

At a glance

AI features—more automation and seamless integration

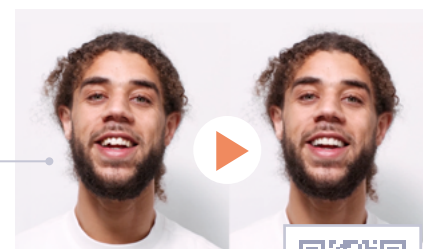
- **New AI Design****: receive high-quality AI design suggestions for single-unit crowns—right in your exocad software. Enable it now!
- **Preparation margin repair tool** enables you to make the most out of imperfect intraoral scans: fix margins to get an acceptable result despite artifacts or holes in the scan
- Save time with **Auto Articulator** for automatic dynamic occlusion*
- **Integration of compact milling machines**: select your preferred block and start production seamlessly from within your CAD software*
- Switch tooth libraries while **keeping the previous setup**



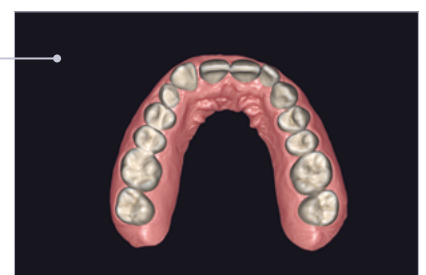
*Requires add-on module

Elevated Smile Creator Module for captivating visualization

- **New AI Services**: with *TruSmile™ Video*** and *TruSmile™ Photo***, generate highly realistic smile makeover videos of your patients, based on your personalized tooth setup. **Wow your patients with predictable smiles and increase case conversion.**
- Design smiles **with virtual gingiva** for superior outcomes
- Design smiles based on patients' **natural teeth**
- Improved 3D-to-photo alignment: **adjust 3D view to match rendering to the camera's focal length**

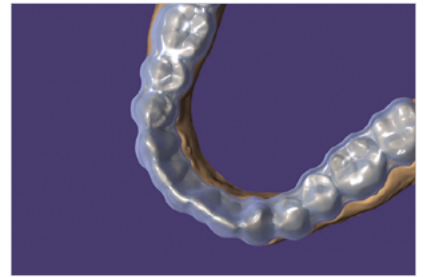


Watch this patient's
*TruSmile™ Video*** here >



Bite Splint Module offers more design speed

- More **automation** in bite splint design
- Design **bite splints for both arches simultaneously**



Full Denture Module improved

- **Copy Denture:** instead of relining an old denture, **rapidly and inexpensively produce a new one**
- Design **dentures on ball attachments**
- Add-on for the **Ivotion™ Denture System** now available with the *Full Denture Module**



*Ivotion™ library purchase from Ivoclar required

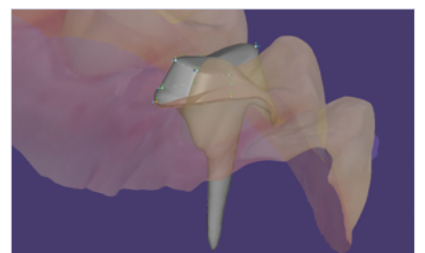
iTero-exocad Connector™ redefines seamless workflows

- Lab/doctor collaboration: **doctors can now share external case-related files** (images, videos and X-rays) via MyiTero™ portal
- New **bi-directional case communication** lets you share designs in 3D
- **Validate margins** with iTero intraoral camera images and visualization of tooth structure with iTero Niri images



New beta feature: post and core*

- Design **post and core** restorations
- A **crown matching the core** can then be **directly designed**



*Available upon request for beta testers

exocad.com/dentalcad-elefsina

Find your exocad reseller here: exocad.com/partners

exocad GmbH

Some products may not be regulatory cleared/released for sale in all markets. Please contact your local exocad reseller for current product assortment and availability. Territorial coverage of the registered trademarks is available on our webpage: exocad.com/imprint

