



**imes-icore**<sup>®</sup>  
Dental & Medical Solutions

COMING  
SOON!



Available  
for order  
**NOW!**



**CORiTEC**<sup>®</sup> 350i **X** PRO series

# CORiTEC® 350i X PRO series

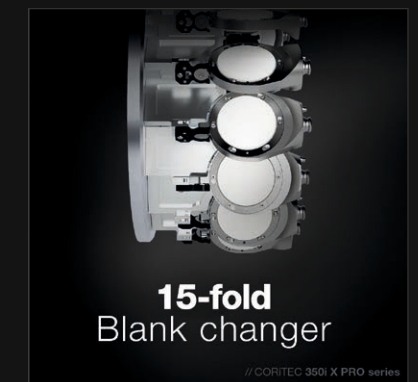
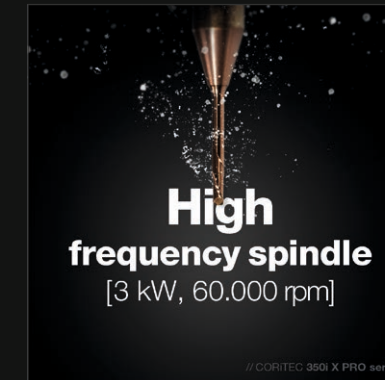
WHAT ARE THE DIFFERENCES?



Motor technology	Servo with absolute encoder	
Resolution	32.000 Inc (0.15 µm)	
Base structure	Polymer concrete	
Screen	15.6" Full HD touchscreen	
Housing	Glossy design, RGB LED lighting with status indication	
Fully automatic workpiece blankchanger	Manual	 15-fold
Blankholder inclusive	2	8
Absolute measurement system in all axes	✓	✓
Spindle power	3 kW	
Spindle bearing	Three hybrid bearings	
Collet	Self cleaning, 6 mm	
Zero point clamping system	✓	✓
Cooling system spindle	Water cooled	

## Features

NEXT-LEVEL PERFORMANCE:  
PERFECT SYMBIOSIS OF DYNAMICS AND PRECISION.





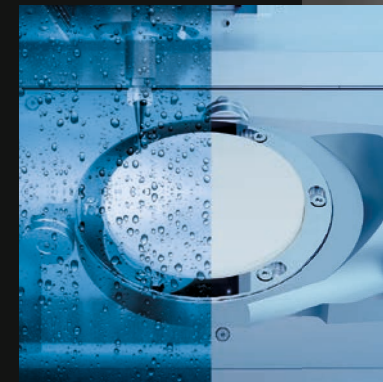
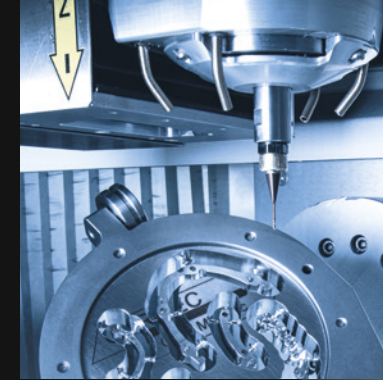
# CORITEC® 350i X PRO series

## PERFECT SYMBIOSIS OF DYNAMICS, STABILITY AND PRECISION

The combination of new, perfectly tuned control and drive components ensures the highest performance in this machine segment. Processing times reduced by up to 50% combined with excellent surface quality allow significant increases in workload and optimize the price-performance ratio.

The new zero point clamping system **powerCLAMP** generates 4 times **XtraPower** clamping force. The resulting stiffness and further reduced vibration characteristics allow a quantum leap in performance. In combination with the extremely powerful 3 kW milling spindle, the highest demands on surface quality are achieved and new standards are set in this machine segment.

Modern and fresh design paired with optimized and smart handling completes the overall concept.



- WET
- DRY
- 5 AX
- 6 mm  
20x
- Temperature control
- Touchscreen
- Mobile app
- Spindle
- Tool holder
- Water spray



# CORiTEC® 350i X PRO

ALL CAD/CAM MATERIALS  
CAN BE PROCESSED

INTEGRATED  
WET AND DRY  
PROCESSING

POWERFUL  
3 KW SPINDLE

**powerCLAMP**  
UPGRADED  
ZERO POINT  
CLAMPING SYSTEM

LARGER  
TOUCH SCREEN  
IN FULL HD

REVOLUTIONARY  
BASE STRUCTURE OF  
POLYMER CONCRETE

COOLING PUMP WITH  
THREEFOLD POWER



**COMING  
SOON!**

CHANGEABLE  
TOOL MAGAZINE

PMMA	WAX
Zr	COMPOSITE
PEEK	SINT
Glass ceramics	PreFab Abutments
CoCr	Ti
Standard	C-Clamp
PreMilled Abutment	Block
Dentures	Zero point clamping system
Crowns, Bridges	Hybrid Abutment
Inlay, Onlay, Veneer	Splint
Full Denture	Drilling template
Model	Model casting
Bridge	Abutments
Telescopic technology	Hybrid machining

# CORiTEC® 350i Loader X PRO

FULLY AUTOMATIC  
15-FOLD BLANK CHANGER

INTEGRATED  
WET AND DRY  
PROCESSING

AROUND THE CLOCK  
24 hours of production

USE OF DIFFERENT ADAPTER SYSTEMS  
e.g. premilled abutments or block materials

**powerCLAMP**  
UPGRADED  
ZERO POINT  
CLAMPING SYSTEM

NEW IONIZER-  
MODULE  
INTEGRATED



**Available  
for order  
NOW!**

COOLING PUMP WITH  
THREEFOLD POWER

INTEGRATED  
CLEANING  
FUNCTIONS

# Applications & holder

## HALF-OPEN BLANK HOLDER (C-CLAMP)

- Enables 5-axis machining up to 90 degrees axis adjustment
- Extends the technical possibilities of your milling machine
- End face machining



## MANUFACTURE OF DENTAL PROSTHESES

- Baltic Denture from Merz Dental
- Dentsply Sirona Dentures



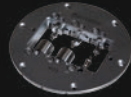
## PREFABRICATED ABUTMENTS

- Short production times
- Production of abutments in very simple processes
- High accuracy of fit due to prefabricated implant interface

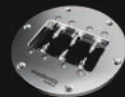
NT-Preform® Abutment (nt-trading)



PreFace® Abutment (Medentika)



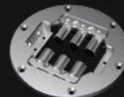
MED-Preform® Abutment (medentis)



DESS Abutmentholder



ELOS premilled Abutment System



## THERAPEUTIC SPLINTS

- Bite splints, bleaching splints
- Snoring splints, aligners
- Simple and high-quality implementation in CAD/CAM processes



## UNIVERSAL HOLDER FOR TURN-MILL-GRINDING PROCESSING

- High precision
- Improved surface quality
- Tool-saving machining
- Suitable adapters:

Universal



NT-Trading



Medentika



Dental Direkt



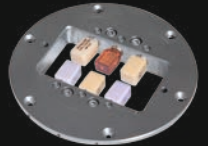
## HYBRID MACHINING - SINTERING AND MILLING

- Milling post-processing of finished restorations using the SLM method
- High precision milling combined with low-cost SLM process
- Compatible with most SLM systems



## GRINDING OF CAD/CAM BLOCKS

- New 6-fold adapter enables effective production
- Exchangeable strips for different adapter systems
- Crowns, onlays, inlays, veneers, bridge frameworks, etc.



## IMPLANT-SUPPORTED BRIDGES AND BARS / ONE-PIECE ABUTMENTS

- Highest fitting accuracy due to new CAM technologies (ReFit)
- Stress-free fit even with larger spans
- Easy production due to high degree of automation with coordinated CAM software



## BIOHPP ELEGANCE PREFABS

- Individual hybrid abutment on PEEK basis
- BioHPP for permanent dentures, free of metal, oxide and monomer
- Homogeneous combination of titanium and BioHPP



## MILLING OF MODEL CASTS

- Production in burnout materials, PEEK or directly in CoCr
- Allergy-free and lightweight model casting when using PEEK
- Cost-efficient



## MILLED IMPLANT MODELS

- DIM (Digital Implant Model) from nt-trading
- Precisely positionable
- 2-part implant analog







**T1/T6 - 3.0 | 6.0 mm**  
radius milling tool short (l = 15 mm)

T1	Ti		
T6	CoCr		

3,0 mm Ø 6 mm

Art.-No. 526029 3006

**T11 - 2.5 | 6.0 mm**  
radius milling tool (single blade, slide coated)

T11	PMMA		
	WAX		
	PEEK		

2,5 mm Ø 6 mm

Art.-No. 530004 2506

**T2/T7 - 2.0 | 6.0 mm**  
radius milling tool short (l = 12 mm)

T2	Ti		
T7	CoCr		

2,0 mm Ø 6 mm

Art.-No. 526029 2006

**T11/T13 - 2.5 | 6.0 mm**  
radius milling tool

T11	PMMA		
	WAX		
	Zr		

2,5 mm Ø 6 mm

Art.-No. 526019 2506

**T3/T8 - 1.5 | 6.0 mm**  
radius milling tool short (l = 12 mm)

T3	Ti		
T8	CoCr		

1,5 mm Ø 6 mm

Art.-No. 526029 1506

**T12 - 1.0 | 6.0 mm**  
radius milling tool (single blade, slide coated)

T12	PMMA		
	WAX		
	PEEK		

1,0 mm Ø 6 mm

Art.-No. 530004 1006

**T4/T9 - 1.0 | 6.0 mm**  
radius milling tool short (l = 9 mm)

T4	Ti		
T9	CoCr		

1,0 mm Ø 6 mm

Art.-No. 526029 1006

**T12/T14 - 1.0 | 6.0 mm**  
radius milling tool

T12	PMMA		
	WAX		
	Zr		

1,0 mm Ø 6 mm

Art.-No. 526019 1006

**T5/T10 - 1.5 | 6.0 mm**  
shaft milling tool short (l = 12 mm, four blades)

T5	Ti		
T10	CoCr		

1,5 mm Ø 6 mm

Art.-No. 526002 1506

**T13/T40/T50 - 2.5 | 6.0 mm**  
radius milling tool (diamond coated)

T13	Zr		
T40	SINT		
T50	COMP		

2,5 mm Ø 6 mm

Art.-No. 526013 2506

**T14/T41/T51 - 1.0 | 6.0 mm**  
radius milling tool (diamond coated)

T14 **Zr**  
T41 **SINT**  
T51 **COMP**

1,0 mm Ø 6 mm

up to 25 mm  
Blades

Art.-No. 526013 1006

**T19 - 0.5 | 6.0 mm**  
shaft milling tool (l = 4 mm)

T19 **UNIVERSAL**

0,5 mm Ø 6 mm

up to 15 mm  
Blades

Art.-No. 526001 0506

**T26 - 3.0 | 6.0 mm**  
radius milling tool long (l = 20 mm)

T26 **Ti**  
**CoCr**

3,0 mm Ø 6 mm

16 - 20 mm  
Blades

Art.-No. 526030 3006

**T32 - 0.6 | 6.0 mm**  
radius milling tool long (l = 12 mm)

T32 **PMMA**  
**WAX**  
**Zr**

0,6 mm Ø 6 mm

up to 25 mm  
Blades

Art.-No. 526012 0606

**T15/T42/T52 - 0.6 | 6.0 mm**  
radius milling tool (conical)

T15 **PMMA**  
**WAX**  
**Zr**  
T42 **SINT**  
T52 **COMP**

0,6 mm Ø 6 mm

up to 25 mm  
Blades

Art.-No. 526019 0606

**T20 - 0.6 | 6.0 mm**  
radius milling tool (conical)

T20 **Ti**  
**CoCr**

0,6 mm Ø 6 mm

up to 15 mm  
Blades

Art.-No. 526003 0606

**T27 - 2.0 | 6.0 mm**  
radius milling tool long (l = 16 mm)

T27 **Ti**  
**CoCr**

2,0 mm Ø 6 mm

16 - 20 mm  
Blades

Art.-No. 526030 2006

**T33/ T43/ T53 - 0.3 | 6.0 mm**  
radius milling tool (conical)

T33 **PMMA**  
**WAX**  
**Zr**  
T43 **SINT**  
T53 **COMP**

0,3 mm Ø 6 mm

up to 25 mm  
Blades

Art.-No. 526019 0306

**T16 - 1.5 | 6.0 mm**  
radius milling tool long (l = 15 mm)

T16 **PMMA**  
**WAX**  
**PEEK**

1,5 mm Ø 6 mm

up to 25 mm  
Blades

Art.-No. 526019 1506

**T21 - 2.5 | 6.0 mm**  
radius grinding tool (diamond)

T21 **glass ceramics**

2,5 mm Ø 6 mm

Blades

Art.-No. 526005 2506

**T28 - 1.5 | 6.0 mm**  
radius milling tool long (l = 15 mm)

T28 **Ti**  
**CoCr**

1,5 mm Ø 6 mm

up to 25 mm  
Blades

Art.-No. 526030 1506

**T34 - 3.0 | 6.0 mm**  
radius milling tool long (l = 27 mm)

T34 **PMMA**  
**WAX**

3,0 mm Ø 6 mm

up to 30 mm  
Blades

Art.-No. 526012 3006

**T17 - 1.5 | 6.0 mm**  
shaft milling tool (l = 15 mm)

T17 **PMMA**  
**WAX**  
**Zr**

1,5 mm Ø 6 mm

up to 25 mm  
Blades

Art.-No. 526001 1506

**T22 - 1.0 | 6.0 mm**  
radius grinding tool (diamond)

T22 **glass ceramics**

1,0 mm Ø 6 mm

Blades

Art.-No. 526005 1006

**T29 - 1.0 | 6.0 mm**  
radius milling tool long (l = 11 mm)

T29 **Ti**  
**CoCr**

1,0 mm Ø 6 mm

16 - 20 mm  
Blades

Art.-No. 526030 1006

**T35 - 2.0 | 6.0 mm**  
radius milling tool long (l = 20 mm)

T35 **PMMA**  
**WAX**

2,0 mm Ø 6 mm

up to 30 mm  
Blades

Art.-No. 526012 2006

**T18 - 0.5 | 6.0 mm**  
radius milling tool (l = 4 mm)

T18 **UNIVERSAL**

0,5 mm Ø 6 mm

up to 15 mm  
Blades

Art.-No. 526026 0506

**T23 - 0.6 | 6.0 mm**  
radius grinding tool (conical, diamond)

T23 **glass ceramics**

0,6 mm Ø 6 mm

Blades

Art.-No. 526005 0606

**T30 - 4.0 | 6.0 mm**  
shaft milling tool long (l = 32 mm, single blade, slide coated)

T30 **PMMA**  
**WAX**  
**PEEK**

4,0 mm Ø 6 mm

up to 30 mm  
Blade

Art.-No. 526012 4006

**T60 - 3.0 | 6.0 mm**  
highspeed milling tool short (l=15 mm)

T60 **Ti**

3,0 mm Ø 6 mm

up to 15 mm  
Blades

Art.-No. 530031 3006



**T61 - 3.0 | 6.0 mm**  
Quattro speed milling tool (l = 15 mm)

T61 CoCr 3,0 mm Ø 6 mm

up to 15 mm ↑

Blades

Art.-No. 526025 3006

**T62 - 2.0 | 6.0 mm**  
torus milling tool (r = 0,2 mm, l = 16 mm, four blades)

T62 Ti CoCr 2,0 mm Ø 6 mm

up to 15 mm ↑

Blades

Art.-No. 526025 2006

**T63 - 1.5 | 6.0 mm**  
torus milling tool (r = 0,08 mm, l = 7 mm, two blades)

T63 Ti CoCr 1,5 mm Ø 6 mm

up to 15 mm ↑

Blades

Art.-No. 526025 1506

**T64 - 1.5 | 6.0 mm**  
torus milling tool (r = 0,08 mm, l = 15 mm, two blades)

T64 Ti CoCr 1,5 mm Ø 6 mm

up to 15 mm ↑

Blades

Art.-No. 526028 1506

**T67 - 2.0 | 6.0 mm**  
shaft milling tool short (l = 7 mm, four blades)

T67 Ti CoCr 2,0 mm Ø 6 mm

up to 15 mm ↑

Blades

Art.-No. 526002 2006

**T68 - 1.5 | 6.0 mm**  
shaft milling tool long (l = 15 mm, four blades)

T68 Ti CoCr 1,5 mm Ø 6 mm

16 - 20 mm ↑

Blades

Art.-No. 526021 1506

**T69 - 1.5 | 6.0 mm**  
shaft milling tool (l = 7 mm, four blades)

T69 Ti CoCr 1,5 mm Ø 6 mm

up to 15 mm ↑

Blades

Art.-No. 530032 1506

**T80 - 2.5 | 6.0 mm**  
drilling tool (l = 22 mm)

T80 Ti CoCr 2,5 mm Ø 6 mm

up to 20 mm ↑

Drill

Art.-No. 526023 2506

**T81 - 1.5 | 6.0 mm**  
drilling tool (l = 18 mm)

T81 Ti CoCr 1,5 mm Ø 6 mm

up to 20 mm ↑

Drill

Art.-No. 526023 1506

**T98 - 2.5 | 6.0 mm**  
shaft milling tool (l = 20 mm, three blades)

T98 CALIBR. 2,5 mm Ø 6 mm

Blades

Art.-No. 526024 2506

**T121 - Ø 1.6 x 0.7 | 6.0 mm**  
T-tool 90° (d = 0.65 mm, l = 7.5 mm, three blades)

T121 Ti CoCr 1,6 mm Ø 6 mm

Blades

Art.-No. 530040 1606

**T122 - Ø 1.7 x 0.7 | 6.0 mm**  
T-tool 90° (d = 0.65 mm, l = 8.0 mm, three blades)

T122 Ti CoCr 1,7 mm Ø 6 mm

Blades

Art.-No. 530040 1706

**T123 - Ø 1.8 x 1.0 | 6.0 mm**  
T-tool 90° (d = 0.9 mm, l = 7.1 mm, three blades)

T123 Ti CoCr 1,8 mm Ø 6 mm

Blades

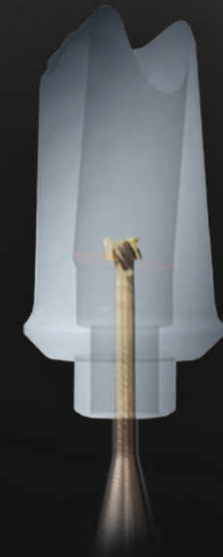
Art.-No. 530040 1806

**T124 - Ø 2.0 x 1.0 | 6.0 mm**  
T-tool 90° (d = 1.0 mm, l = 9.5 mm, three blades)

T124 Ti CoCr 2,0 mm Ø 6 mm

Blades

Art.-No. 530040 2006





# Materials

## priti® MULTIDISC (ZIRCONIUM DIOXIDE)

High-end zirconia for highest mechanical and aesthetic demands. Indications up to 16-unit bridges, max. 3-unit bridges only with High Translucent.

Wide range of colors and heights available.

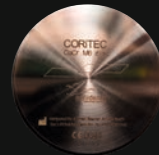
	Translucence	Strength
Multi Translucent	49-40 %	80 - 1150 MPa
High Translucent	49 %	> 650 MPa
Extra Translucent	45 %	> 1150 MPa
Translucent	40 %	> 1150 MPa
Opaque	35 %	> 1150 MPa



## CORITEC NEM (NON-PRECIOUS METALS)

Burn-on non-precious metal dental milling alloys for the fabrication of e.g. up to 16-unit bridges, implant-supported superstructures etc.

CORITEC NEM is characterized by excellent mechanical properties and good machinability.



CoCr M6 disc

molybdenum containing  
type 4 alloy (EN ISO 22674)



CoCr W8 disc

tungsten containing  
type 4 alloy (EN ISO 22674)

## CORITEC SPLINT COMFORT POLYMERS

Extremely comfortable and biocompatible material for the fabrication of therapeutic splints such as occlusal or stabilization splints. For maximum comfort it becomes more flexible at mouth temperature.

Available in 16 mm and 20 mm.



## CORITEC SPLINT BASIC POLYMERS

Crystal clear material for the fabrication of therapeutic splints and drilling templates. Good machinability.

Available in 16 mm and 20 mm.



## CORITEC TEMP PMMA DISC

An excellent material to work with that is suitable for long-term temporaries with up to three years of wear and that also contains intrinsic color gradients.

Available in 8 vita shades in 16 mm and 20 mm.



## CORITEC GUM PMMA DISC

For gingiva replacement, available in 25 mm.



Scan yourself to priti@multidisc  
and CORITEC materials!  
[www.pritidenta.com](http://www.pritidenta.com)



# CORiTEC® SmartControl

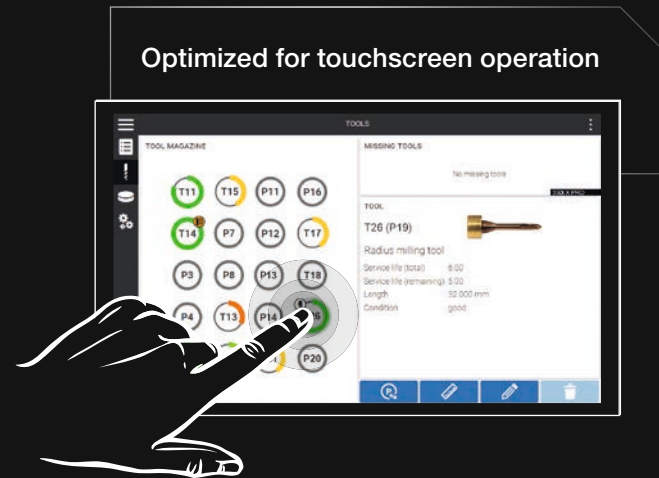
SMART CONTROL OF MACHINE SOFTWARE

## SmartControl: one touch ahead!

The newly developed control software SmartControl provides absolutely intuitive operation of our milling machines. From selecting the job to milling or querying the machine status: the self-explanatory and optimized handling makes it possible to start operating the machine in the shortest possible time. Starting a milling process requires only two clicks – you benefit from the smart time savings for your workflow!

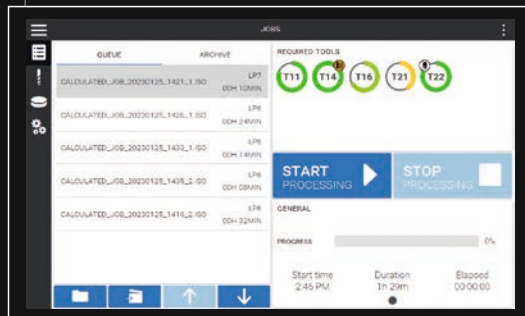
## FEATURES

- Modern design and simple touch operation
- Intelligent selection of milling jobs
- Easy tool and material loading
- Auto-calibration of the machine
- Wizard guided cleaning and maintenance
- Connection to the Dental Smart Market (DSM)
- Multilingual program interface
- Automatic update function

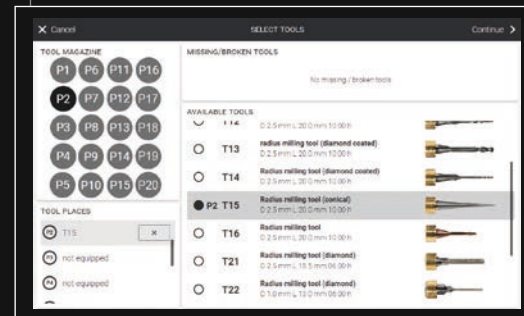


Optimized for touchscreen operation

Automated transfer of information from the CAM software



Ideal tool management



# Scanner COMPATIBLE WITH exocad

CORiTEC i3Dscan color

- Automatic object guidance into the measuring field
- Modern touch-operation design
- The 180-degree opening offers a large working area

CORiTEC i3Dscan color HR

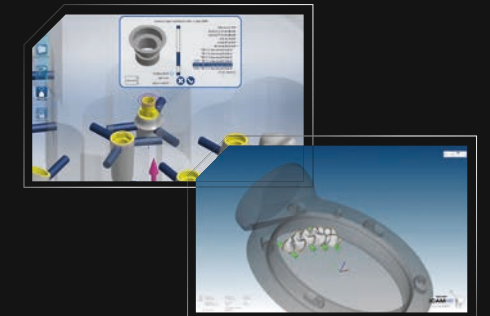
- Enormously high scanning efficiency and precision (4 µm)
- Color texture scan
- Blue-Light LED & high resolution camera (2.8 MP)
- All modules included in the scope of delivery



# CAM software

CORiTEC iCAM V5 smart

- All strategies optimized for 5-axis simultaneous machining
- Automatic exchange of implant connections (ReFit option)
- No annual license fees
- Fully automatic and easy operation with “Wizard Workflow“



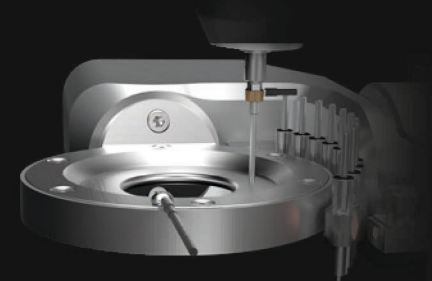
CORiTEC iCAMHD

- hyperDENT based CAM software
- Flexible payment model (purchase or subscription model)

# Auto-calibration

Fast, precise, cost-efficient

Auto-calibration allows both, dentist and dental technician, a quick and easy handling to ensure lasting precision without compromise.

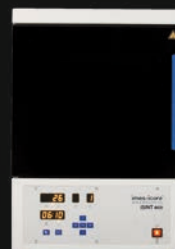




# Sintering furnaces

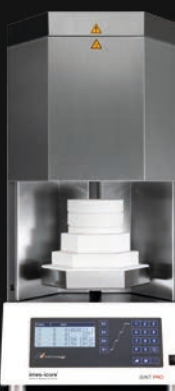
## iSINT eco

The iSINT eco offers high-quality technology as well as suitable accessories for high demands at a fair price. Compact and with a small footprint, the iSINT eco sintering oven still has sufficient capacity for a sintering bowl Ø100 mm for approx. 25 units. The door stop can be mounted at the right or left side.



## iSINT PRO

A larger sintering capacity of up to 80 single crowns is offered by the new iSINT PRO. With a heating system of four high-quality molybdenum disilicide (MoSi<sub>2</sub>) heating elements, you can choose between conventional long-term sintering or SPEED sintering at a rate of up to 99 °C/min/210.20 °F/min. The iSINT PRO is operated with a simple and convenient program control. The programs are indicated on a 4-line LCD display. A timer function for overnight sintering or the use of pre-drying programs for shaded zirconium restorations offer further options. In addition, three service programs are available for easy maintenance of the sinter furnace.



	iSINT eco	iSINT PRO
Number of heating elements	4	4
Display	7-segment	4-line LCD
Number of program memories	9	30
Combustion chamber capacity	1 x 100	2 x 120
Max. heating rate	30 °C/min / 86 °F/min	99 °C/min / 210.20 °F/min
Power in W	1300	3200
Lift function	No	Yes
Speedsintering	No	Yes

# Machine tables

The undercounters, specially developed for the needs of the various machine types, impress with their sturdy design as well as their attractive appearance. The machine tables have sufficient storage space. Stable rollers ensure optimum stability and easy movement of the devices. Drawers, cable ducts and a cabinet for the integration of appropriate suction systems are already provided.

Machine table 350i X PRO	Machine table 350i Loader X PRO
758 x 790 x 900 mm / 29.9 x 31.1 x 35.4 inch W x D x H	1058 x 790 x 900 mm / 41.7 x 31.1 x 35.4 inch W x D x H
CORTEC 350i X PRO	CORTEC 350i Loader X PRO



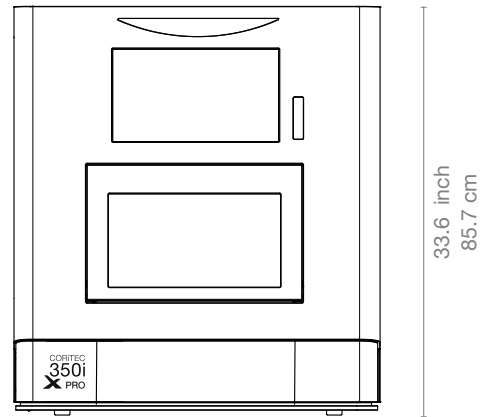
# Dust extraction systems

	iVAC eco+	iVAC silent PRO	iVAC PRO+
Volume flow	260 m <sup>3</sup> /h	240 m <sup>3</sup> /h	280m <sup>3</sup> /h
Output	1200 W	1610 W	1200 W
Filter system	Dust drawer, HEPA filter	Teflon filter cartridge, automatic cleaning feature	Teflon filter cartridge, automatic cleaning feature
Filter volume	25 l	8 l	15 l
W x D x H	7.3 x 18.1 x 29.5 inch 440 x 460 x 750 mm	10.6 x 21.2 x 21.1 inch 270 x 540 x 535 mm	13.7 x 13.7 x 39.3 inch 350 x 350 x 1000 mm
Supply voltage	100-240 V 50/60 Hz	110-230 V 50/60 Hz	100-240 V 50/60 Hz



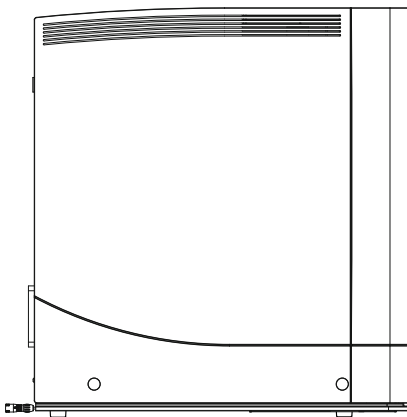
# Dimensions

## CORiTEC® 350i X PRO series

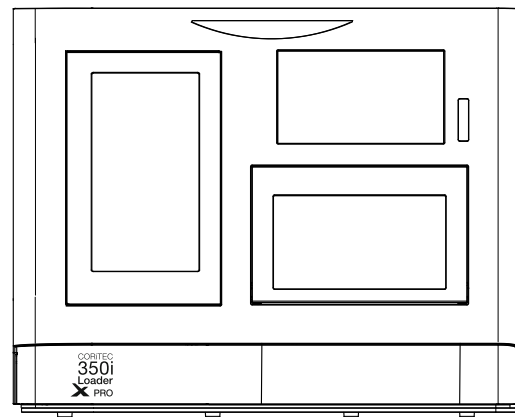


29.8 inch  
75.8 cm

33.6 inch  
85.7 cm

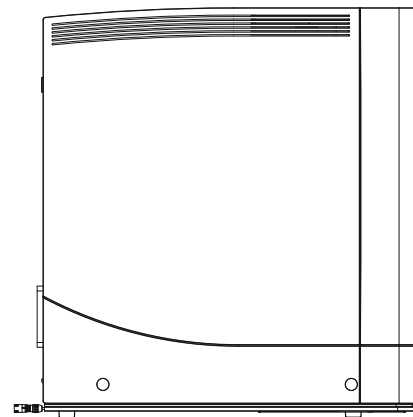


29.8 inch  
79 cm



41.6 inch  
105.8 cm

33.6 inch  
85.7 cm



29.8 inch  
79 cm

# In numbers

CORiTEC 350i X PRO

CORiTEC 350i Loader X PRO

Mechanics / Electronics		
Base structure	Polymer concrete	Polymer concrete
Number of axes and operation type	5 axes, simultaneous machining	5 axes, simultaneous machining
Rotation angle	A-axis 360°, B-axis 115°	A-axis 360°, B-axis 115°
Spindle	High-frequency spindle	High-frequency spindle
Maximum spindle speed / spindle power	60.000 rpm 3 kW	60.000 rpm 3 kW
Spindle cooling	Water cooled	Water cooled
Zero point clamping system <b>powerCLAMP</b>	Yes	Yes
Blankchanger	-	Up to 15 blanks with stainless steel holder
Tools	Milling and grinding tools with 6 mm shaft	Milling and grinding tools with 6 mm shaft
Tool changer	20-fold	20-fold
Tool length control	≤ 0.002 mm precision	≤ 0,002 mm precision
Integrated PC	Windows based	Windows based
Display	15.6" Full HD touchscreen	15.6" Full HD touchscreen
Illumination	RGB LED illumination with status indication	RGB LED illumination with status indication
Software	SmartControl™	SmartControl™
Compressed air supply	6,0 - 9,0 bar @ 80 l/min 87 - 130 PSI @ 2,9 cf/min	6,0 - 9,0 bar @ 80 l/min 87 - 130 PSI @ 2,9 cf/min
Cooling liquid	3,7 l / 0,98 gal (US)	3,7 l / 0,98 gal (US)
Connecting requirements		
Weight	ca. 220 kg / 485 lbs	ca. 265 kg / 584 lbs
Width x depth x height	758 x 790 x 857 mm / 29.9 x 31.1 x 33.8 inch	1058 x 790 x 857 mm / 41.6 x 31.1 x 33.8 inch
Supply voltage / frequency	100 V - 240 V / 50/60 Hz	100 V - 240 V / 50/60 Hz



# Sales and support partner worldwide



Represented for you in over 100 countries.

imes-icore® GmbH has been a leading manufacturer and technology partner since 2002 in the field of dental CAD/CAM systems and solutions.

With its unique range of dental milling and grinding systems, imes-icore® offers a perfect selection for all individual requirements of dental laboratories, milling centres and dental practices of all sizes.

Our Open-System product philosophy makes it possible to easily integrate our milling machines into your existing workflow and to integrate them with your open scanners and your CAD/CAM software. We are open for your material selection.

imes-icore® GmbH

Fon +49 (0) 66 72/898 228

Fax +49 (0) 66 72/898 222

dental@imes-icore.com