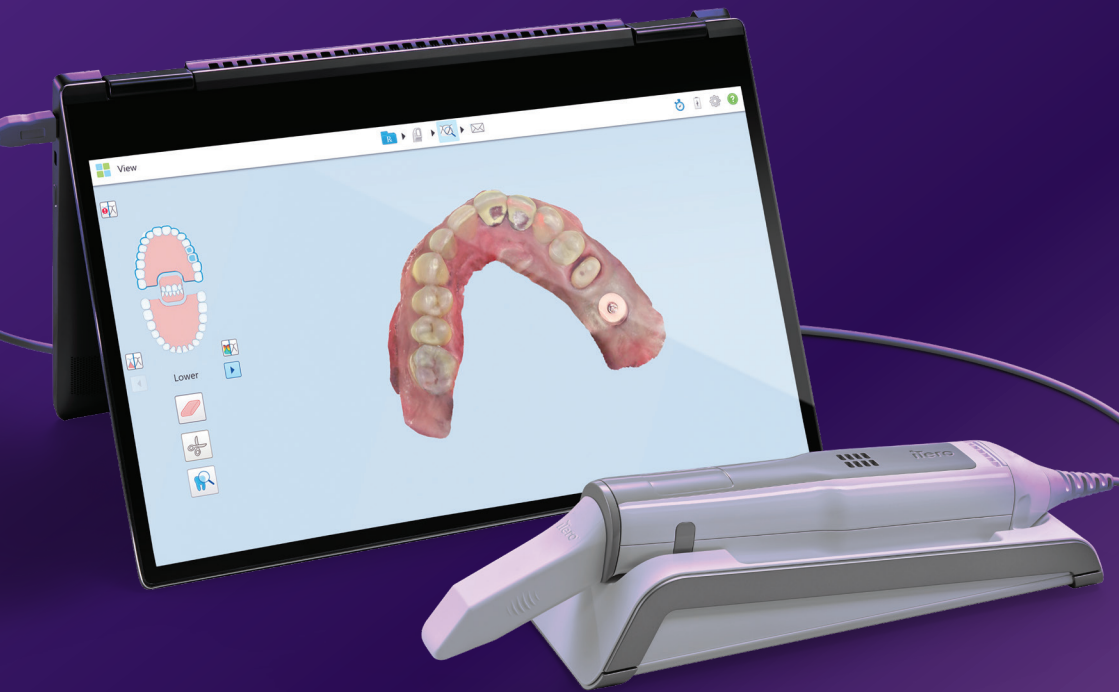


Build your practice on a  
**trusted foundation.**



it starts with **iTero**™

# Your digital transformation is within reach with our restorative platform. Experience the first restorative-only iTero™ intraoral scanner option.

- No ongoing service plan required\*
- Open STL system
- Unlimited sending of cases anywhere
- Unlimited cloud storage
- Scale at your pace
- Includes first year's foundation service plan\*\*

➤ Available from iTero authorised distributors.



Scan the QR code to request a demo.

it starts with iTero™

\*Service plans include on going software updates as well as additional services that may incur fees without a service plan. Contact your iTero support team to find out more.

\*\* Foundation Service Plan details are available at: [https://storage-itero-production-eu.s3.amazonaws.com/download/rpa/anz/iTero\\_PA\\_Service\\_Schedule\\_AU.pdf](https://storage-itero-production-eu.s3.amazonaws.com/download/rpa/anz/iTero_PA_Service_Schedule_AU.pdf)

align™ ©2023 Align Technology, Inc. INVISALIGN, ITERO and CLINICHECK, among others, are trademarks and/or service marks of Align Technology, Inc.