



Connect



Scan



Diagnose



Plan



Treat



Monitor



Retain

Practice performance
is a heavy lift.

Think again.

50% smaller wand.¹

Multi-angled
cameras.



Introducing the new iTero Lumina™ intraoral scanner, the next generation of digital scanning technology.

The iTero Lumina™ scanner pushes the boundaries of what intraoral scanners can do and sets a new standard for practice performance. With effortless scanning and superior visualisation², this small wand means a big leap for your practice.

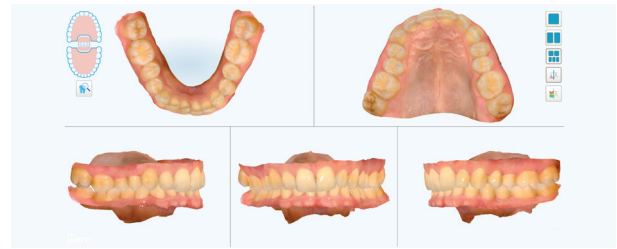
iTero lumina™

How it works.

The iTero Lumina scanner is powered by iTero Multi-Direct Capture™ technology, developed to quickly³, easily⁴, and accurately⁵ capture more data while delivering exceptional scan quality.



3X larger field of view⁴ and maximum capture distance of 25mm designed to simplify the capture of challenging areas such as palates, edentulous spaces, partially erupted and crowded teeth.



Photorealistic 3D models comparable to intraoral photos² thanks to advanced optics and innovative new software.

Key benefits.

High-quality clinical decisions.

Achieve photorealistic scans that enable high-quality clinical decisions the same way intraoral photos do², through larger data capture, high accuracy⁵, and new advanced software.

Practice efficiency and profitability.

Scan effortlessly at 2x the speed³ with exceptionally wide field of view and capture distance, enabling minimal manoeuvring that sets a new level of ergonomics and comfort. Plus, eliminate the need for intraoral photos² in patient record-taking and Invisalign® case submission.

Elevated patient comfort and engagement.

Offer a more comfortable experience for adults, kids and teens alike, with a 50% smaller wand¹ and increased scanning speed. Plus, enhance patient engagement and motivation² with exceptional 3D model quality⁵ across all visualisations and simulations.



[iTerocom](https://www.itero.com)

iTero lumina™

1. Compared to iTero Element 5D imaging system wand, excluding the wand cable.*
2. For Invisalign record-taking cases only. Based on a survey in September 2023 of n=22 users who participated in a global limited market release, working with iTero Lumina intraoral scanner for an average period of 6 months, representing both Invisalign trained general practitioners, orthodontists and their staff in NA, EU and APAC, who were presented with a 4 point level of agreement scale from strongly agree to strongly disagree with the following statement: "iTero Lumina intraoral scanner 3D model is comparable to that of an intraoral photo." and "iTero Lumina" intraoral scanner photorealistic scans enable orthodontic clinical assessment the same way intraoral photos do." and "iTero Lumina" intraoral scanner 3D model's superior 3D model eliminates the need to take intraoral photos." and "iTero Lumina intraoral scanner 3D model's superior 3D model boosts patient engagement."
3. Save time with an enhanced scanning experience in which the user can scan 2x faster* compared with previous iTero intraoral scanners. *Compared to iTero Element 5D wand with tolerance AVE=±01 operating at a working distance from 0-20 mm.*
4. The iTero Lumina intraoral scanner offers 3x larger field of view enabling faster scanning. Compared to the field of view of the iTero Element 5D imaging system, when the iTero Lumina intraoral scanner's scanning distance is 12 mm.*
5. The iTero Lumina intraoral scanner has scientifically proven greater accuracy* for your clinical orthodontic needs. *Compared to the accuracy of the iTero Element 5D imaging system.*
*Data on file at Align Technology, as of November 15, 2023.