

GERMANY

NT-Trading GmbH & Co. KG
G.-Braun-Str. 18
76187 Karlsruhe
Germany

E info@nt.dental
W www.nt.dental

NORTH AMERICA

NT-US, Inc.
132 Pepes Farm Road
Unit 3
Milford, CT 06460
USA

E info@nt.dental (general information)
E orders-us@nt.dental (for orders)
W www.nt.dental

PRODUCTS AND SERIES

Advantage through Innovation



1012021-A1000-EN-V2-BKD



WWW.NT.DENTAL

NT DIGITAL
DENTAL
TECHNOLOGY

WWW.NT.DENTAL

NT DIGITAL
DENTAL
TECHNOLOGY

DIGITAL DENTAL TECHNOLOGY

We are pioneers in digital implantology who have drawn a lot of attention at an early stage. Thanks to our patented innovations we are always one step ahead of the competition.

Innovation and quality at the highest level, paired with a fair price-value equation makes NT Dental the ideal partner in the field of digital dental technology.

We research, develop, produce and offer highly innovative solutions - and all are „Made in Germany“. NT Dental is a globally operating company, our products and our manufacturing processes meet the high safety and regulatory requirements of the health authorities in the major markets, such as Europe, the USA, Canada, Japan and Russia.

We impress with our cutting edge innovations and the excellent quality of our products. Our constantly growing customer base confirms this. Experience it yourself!



”

**BECAUSE EVERY DETAIL IS PRECISE,
OUR PRODUCTS FIT PRECISELY.**

3D-Guide®

Scanbody for high-precision transfer of the implant position.

BENEFITS:

- exact positioning via metal interface
- suitable for intraoral scanners
- the different geometries of the lateral surfaces guarantee an exact repositioning in the CAD software even with incomplete capture
- integrated aspiration-proof screw
- X-ray detectable
- alignment of scanbody can be incrementally adjusted via the abutment-implant connection.
- series and platform can be easily identified by laser engraving

APPLICATION:

- Scanbody for model scan
- Scanbody for intraoral scanners

TECHNICAL DETAILS:

- 2-3 µm manufacturing tolerance



Titanium Base

For the production of individual implant-supported hybrid abutments.

BENEFITS:

- engaging
- individual abutment design within the CAD software via the NT-IQ implant libraries
- large-area bonding, therefore permanent and stable connection to the base
- applicable for conventional processing or CAD/CAM technology

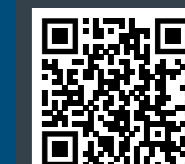
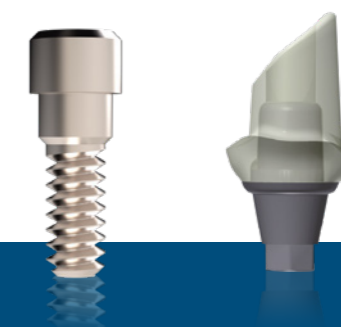
APPLICATION:

- titanium base to bond individually manufactured superstructures from ceramic materials (zirconium dioxide, lithium disilicate) or plastics (PMMA, PEEK, composite)

TECHNICAL DETAILS:

- Ti6Al4V ELI Grade 23

 THE SECURE CONNECTION
PRECISE. PROVEN. RELIABLE.



Titanium Base NX

Titanium base non-engaging for the production of individual bridge/bar constructions on multiple implants.

BENEFITS:

- non-engaging
- can be shortened from 5mm to 3mm, considering different occlusal space conditions
- available in 2 gingival heights
- optimized emergence profile, very good adaptation to existing gum conditions
- specifically developed for CAD/CAM technology

APPLICATION:

- for individual bridge/bar constructions on several implants made of ceramic materials (zirconium dioxide, lithium disilicate) or plastics (PMMA, PEEK, composite)

TECHNICAL DETAILS:

- Ti6Al4V ELI Grade 23



2-CONnect®

Equalizes divergences between different angled implants. Available in various gingival heights and angulations.



The NT LOcON attachment is an ingenious concept that redefines flexibility and efficiency.

BENEFITS:

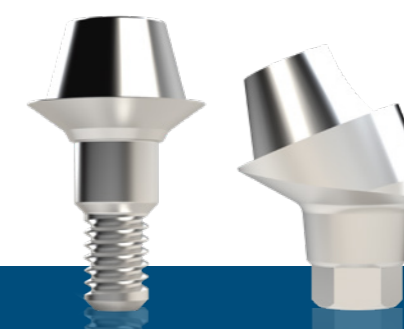
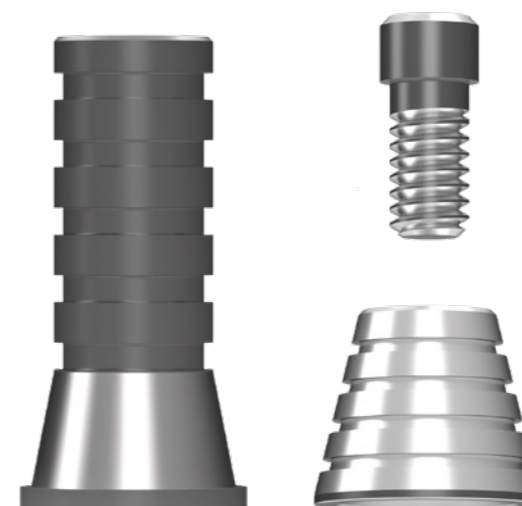
- self-centering cone connection
- highest flexibility with divergent implants positions, i.a. can be combined with NT-LOcON locator type attachment
- tension-free fit through optional adhesive connection (female part)
- applicable for conventional procession or CAD/CAM technology
- optimized abutment design enables even distribution of occurring forces
- one single type of female part (cap) covers all implant systems and platforms
- female part (cap) for locator-type attachment (LOcON) is optionally available

APPLICATION:

- for bars, bridges and structures without rotation protection

TECHNICAL DETAILS:

- Ti6Al4V ELI Grade 23



DIM-Analog[®]

Digital Implant Model Analog -
Available for 26 implant systems within
the NT-IQ implant libraries.

BENEFITS:

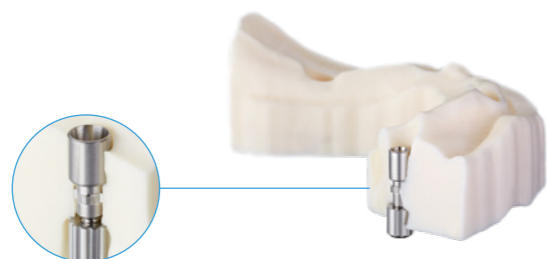
- implant analog for digital model production within the Modelbuilder CAD applications
- two-part repositionable implant analog
- can be positioned exactly through guidance elements
- position correction possible
- design supports exact repositioning of removable gingiva parts
- sleeve available for optional use in conventional plaster models

APPLICATION:

- for the production of implant models in the digital workflow

TECHNICAL DETAILS:

- Ti6Al4V ELI Grade 23
- stainless steel



NT-Preform[®] + Holder

Milling blank for individual one-piece titanium abutments
in the CAD/CAM-process.

BENEFITS:

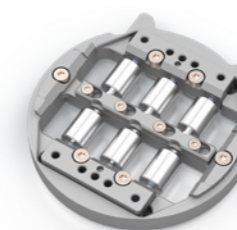
- precise prefabricated abutment-implant interface
- individual abutment design within the CAD software via the NT-IQ implant libraries
- market proven bi-lateral clamping setup is supported in most CAM systems
- uni-lateral clamping setup is optionally available for supported CAM systems

APPLICATION:

- primary telescopes on implants
- mesio-structures for crowns and bridges
- occlusal screwable structures

TECHNICAL DETAILS:

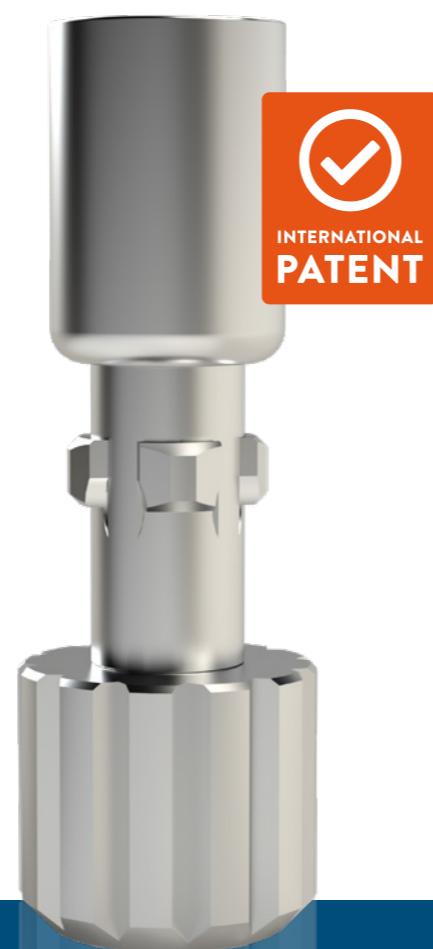
- Ti6Al4V ELI Grade 23 (NT-Preform)



Bi-Lateral Setup



Uni-Lateral Setup



NT X-tra Holder Set

The multi-part X-tra holder set protects the implant interface from damage during the finishing/processing phase.

BENEFITS:

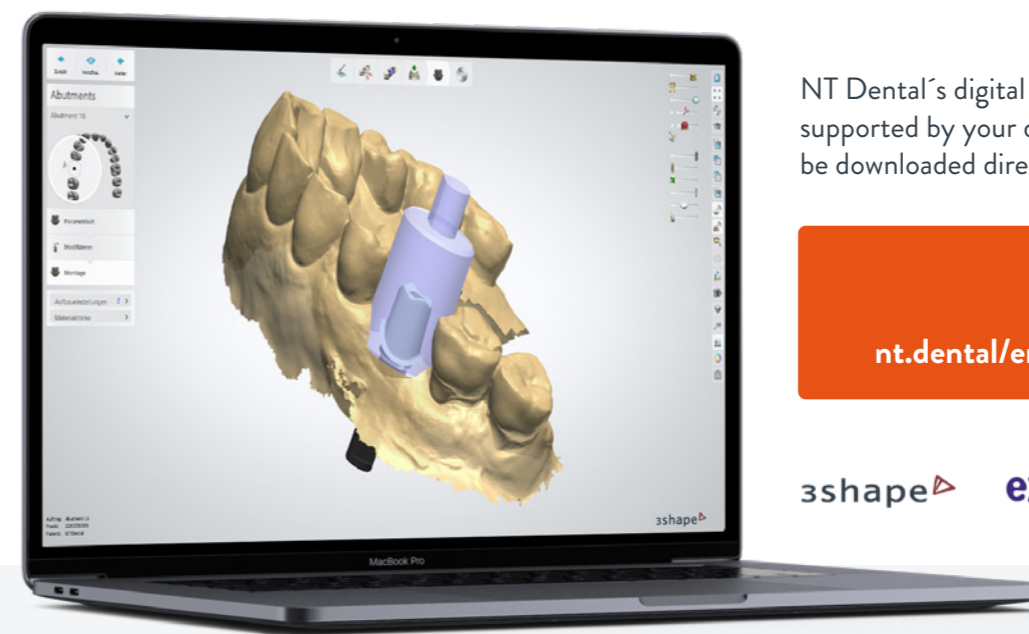
- solid stainless steel grip for optimal heat dissipation during finishing/processing
- includes 3 inserts to cover 26 implant systems on 3 mill lab analog sizes
- mill lab analogs and inserts can be changed quickly by just loosening a thread pin

SET INCLUDES:

- Handle
- Screwdriver for Handle
- Insert for the Handle Ø 3.5 mm
- Insert for the Handle Ø 4.3 mm
- Insert for the Handle Ø 5.0 mm
- Case



NT-IQ Implant Libraries



NT Dental's digital NT-IQ implant libraries are supported by your dental CAD Software and can be downloaded directly from our website at:



3shape  exocad  dental wings 

The following NT abutment applications are included in the NT-IQ implant libraries:

Titanium Base

Engaged adhesive base for individual tooth-colored ceramic abutments or synthetics.

Titanium Base NX

Non-engaged adhesive base for individual hybrid bridges/ -bars on multi-implant cases made from ceramics.

NT-Preform®

Milling blank made of titanium with prefabricated abutment-implant interface for individual one-piece abutments.

2-CONnect®

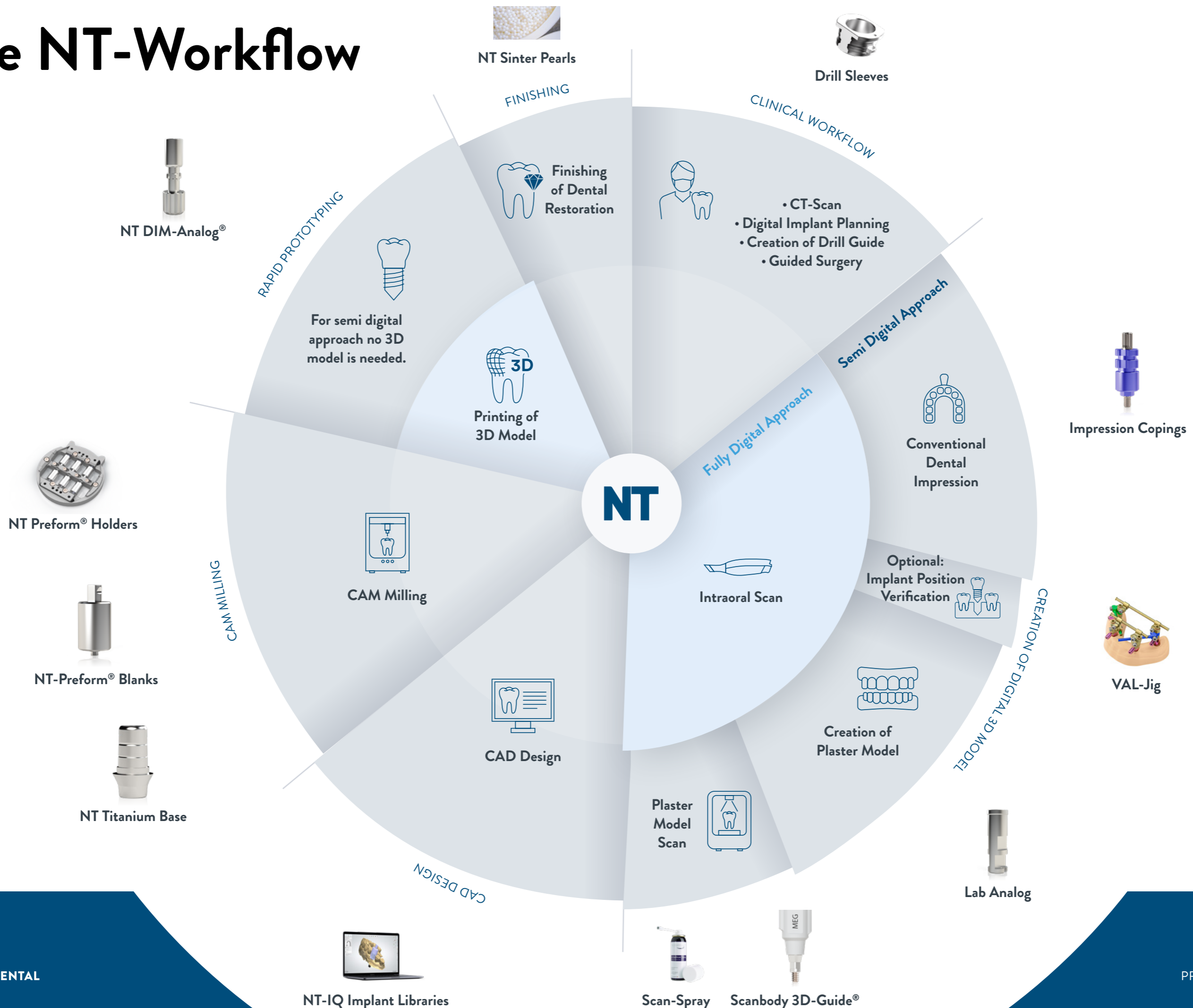
Angle compensation abutment for divergent implants that may be used in connection with the NT-LOcON locator type attachment.

DIM-Analog®

Two-part analog for digital implant model making.

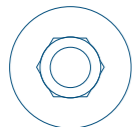


The NT-Workflow



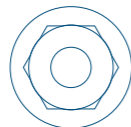
NT-Series and Compatibility

● BEG-SERIES



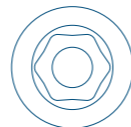
BEGO Implant Systems®
Semados® S, RI-Line

● BIO-SERIES



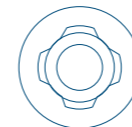
BioHorizons® | internal

● BRE-SERIES



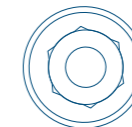
Bredent Medical® | Sky®

● MIC-SERIES



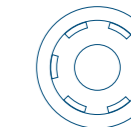
MIS® | C1®

● MIS-SERIES



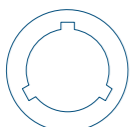
MIS® | SEVEN®

● NEO-SERIES



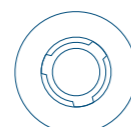
NEOSS Implant System®
NEOSS™

● CAM-SERIES



Altatec® | Camlog®

● COL-SERIES



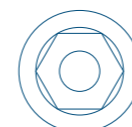
Altatec® | Conelog®

● E-SERIES



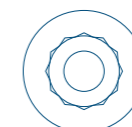
Nobel Biocare™ | Replace Select®

● R-SERIES



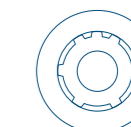
Zimmer Biomet
Tapered Screw-Vent®

● S-SERIES



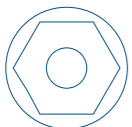
Dentsply Sirona®
Astra Tech Implant System
OsseoSpeed® TX

● SEV-SERIES



Dentsply Sirona®
Astra Tech Implant System™ EV

● F-SERIES



Nobel Biocare™ | Nobel Active™

● K-SERIES



Nobel Biocare™ | Brånemark®

● H-SERIES



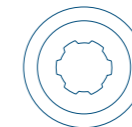
Zimmer Biomet | Certain®

● T-SERIES



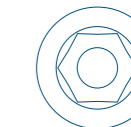
Dentsply Sirona® | Xive®

● Y-SERIES



Dentsply Sirona® | Ankylos®

● THO-SERIES



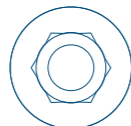
Thommen Medical® | SPI®

● I-SERIES



Zimmer Biomet
Osseotite® External Hex®

● HIO-SERIES



HIOSSSEN® | OSSTEM TS®

● L-SERIES



Straumann® | Bone Level

● UPR-SERIES



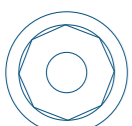
Sweden & Martina
Implantology™
Premium Kohno®

● UTG-SERIES



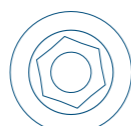
Sweden & Martina
Implantology™
Premium TG®

● N-SERIES



Straumann® | Tissue Level

● MEG-SERIES



MegaGen® | AnyRidge®

● MEX-SERIES



Medentis Medical® | ICX®



NT Sets



Tool Set

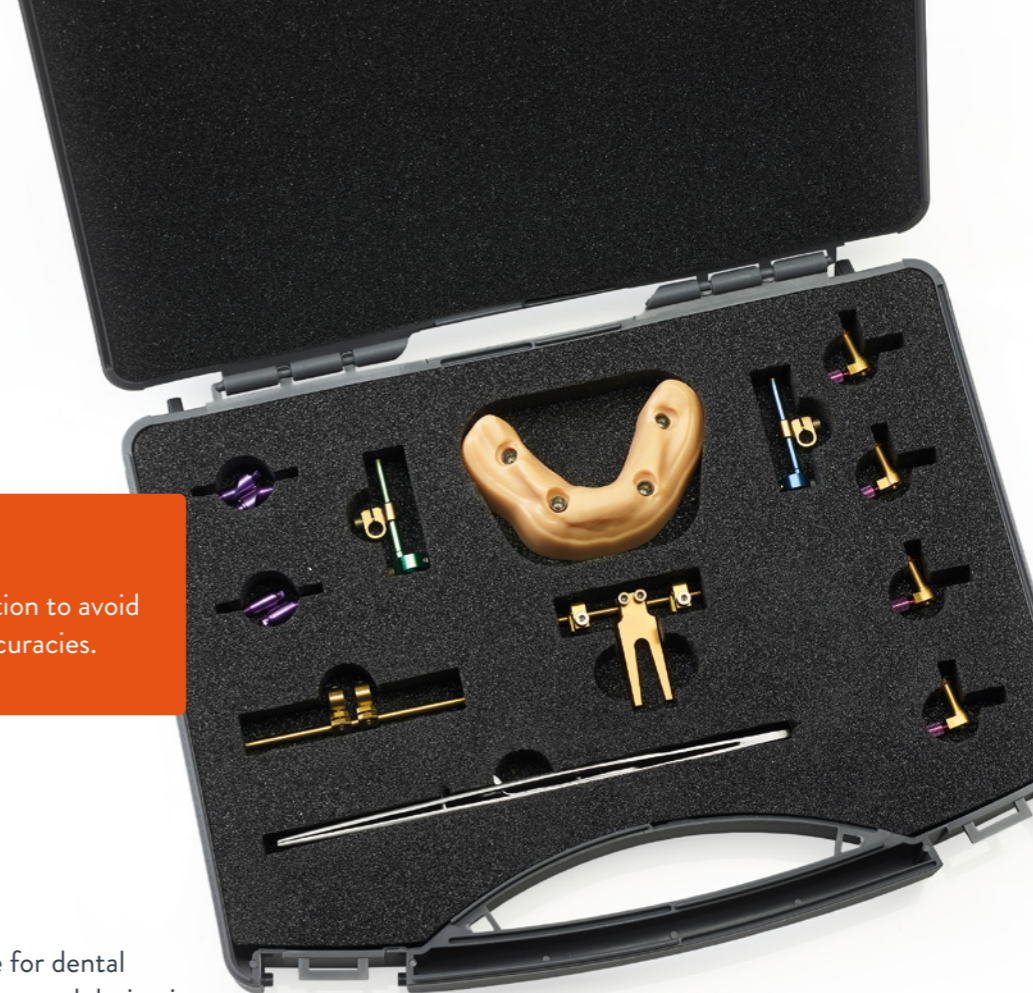
13-piece tool set in a black wooden box including a torque ratchet, ratchet adapter and ISO shaft inserts for the tightening of abutment screws of all 26 NT supported implant systems.

Screwdriver Set

11-piece screwdriver set in a practical metal box for tightening of abutment screws of all 26 supported implant systems.



VAL-Jig

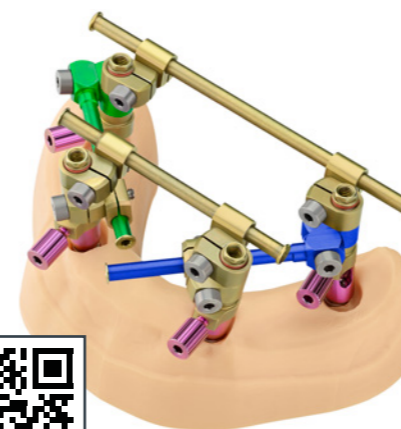


INNOVATION

The intelligent solution to avoid implant model inaccuracies.

Mounting Fixture for Tooth Implants.

The NT VAL-Jig is a mounting fixture for dental implants with a carrier case that can be used during intraoral applications. It ensures a precise implant position transfer and a subsequent exact position control of implant analogs on working and patient models.



VAL-Jig VIDEO

THE SET INCLUDES:

- NT-Handle VAL-Jig
- NT-Frontal Fixing Element
- NT-Retral Fixing Element Medium/Long
- NT-Lateral Fixing Element Right (Green)
- NT-Lateral Fixing Element Left (Blue)
- NT-Fixing Post with Knurled Screw
- NT-Tool VAL-Jig Hex \varnothing 24 mm
- NT-Tool VAL-Jig Spherical Torx \varnothing 24 mm
- NT-Tool VAL-Jig Spherical Torx \varnothing 50 mm
- NT-Tweezers, self-holding
- NT-VAL-Jig Case
- NT-VAL-Jig Model



Excellence meets Expertise

WHO WE ARE

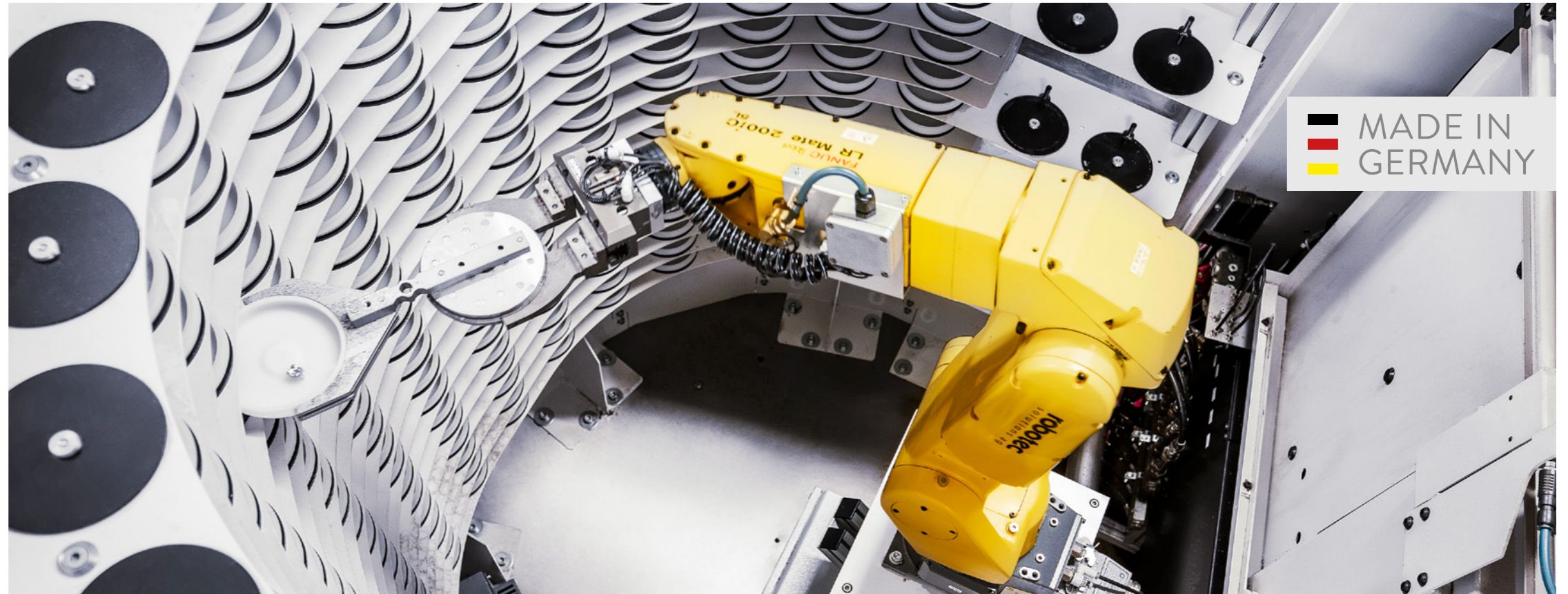
We are a global provider of digital dental technologies. Our own research & development and production site in Germany guarantee the highest quality, precision and reliability. Our solutions are in demand and valued worldwide and are an integral part of digitally created dental restorations and treatments.

OUR PERFORMANCE PROMISE: USER SATISFACTION

Our goals are customer satisfaction and the continued improvement of digital dental technology. All of our actions are geared towards these goals. Therefore we would like to be closer to the customers than anyone else. This helps us better understand the challenges users face. Therefore we can offer targeted, individual and competent solutions. We are your partner for success!

SUCCESS THROUGH QUALITY

Our high-quality engineering is characterized by a high level of vertical integration in production and R&D. Our quality management complies with the high medical



technology standards of the MDR and FDA. Through our passion for precision, reliability and state of the art technology users can trust that our solutions are absolutely safe to use.

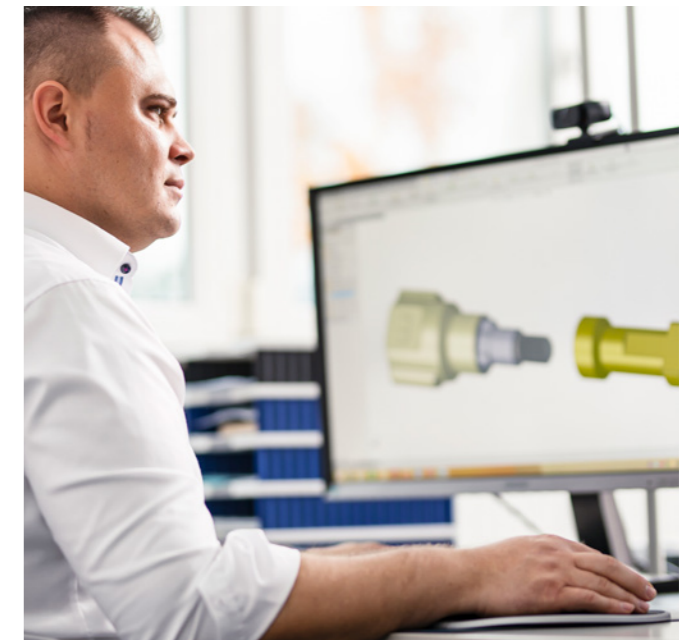
MORE THAN A MANUFACTURER – NT PROVIDES SYSTEM SOLUTIONS

At our international headquarter in Karlsruhe, Germany, we conduct both product development and production in order to guarantee the necessary quality standards that are tailored to the needs of our customers around the world. Our products are manufactured using precise processes with the most sophisticated production and quality control methods. All processes, from product development, application support to manufacturing, are under one roof.

This is our clear commitment to providing our customers solutions that work in real life applications.

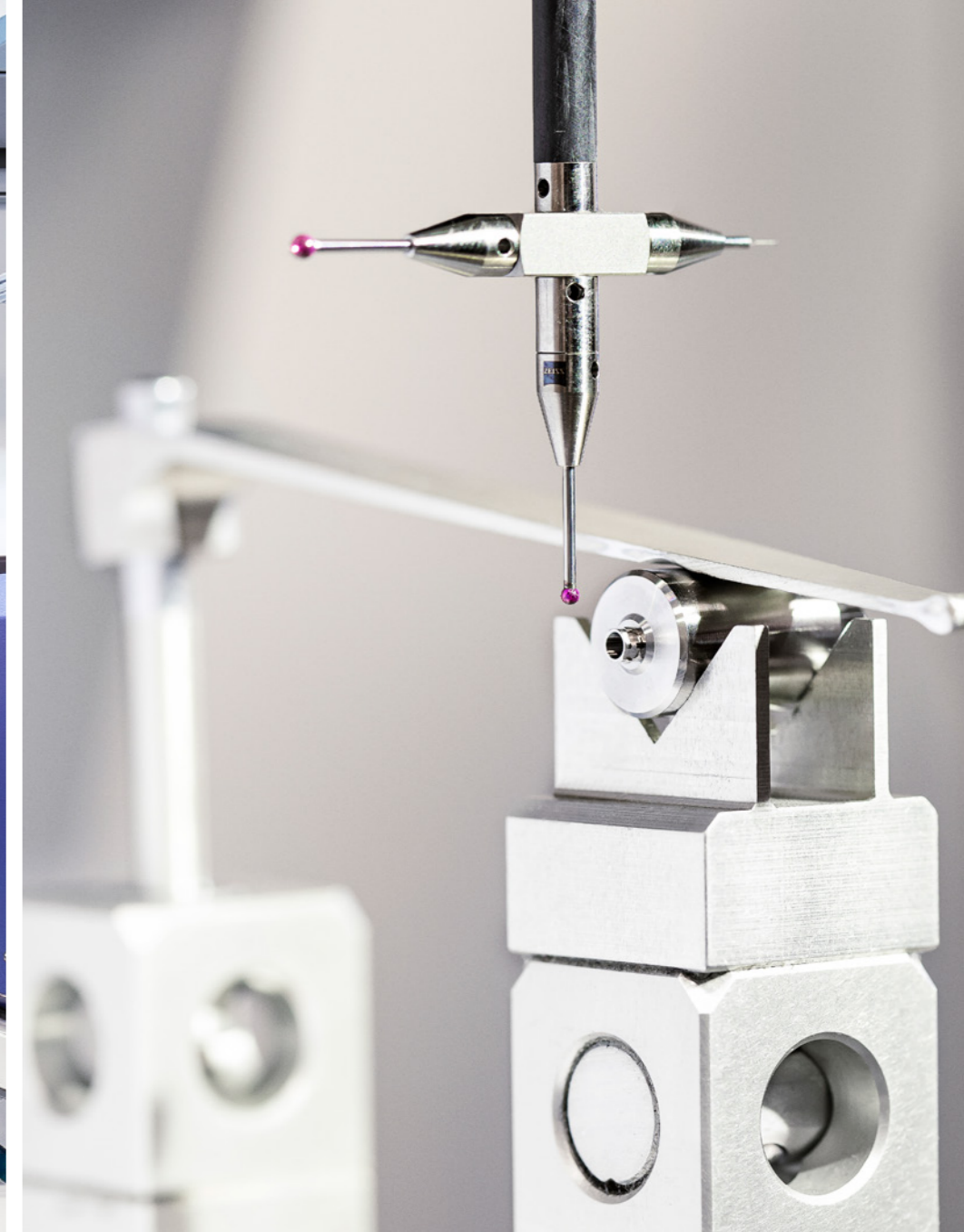
MEANINGFUL INNOVATION

The philosophy of NT Dental - innovative, top quality and customer-oriented - has shaped the company's success story from the very beginning. Since the company was founded, we have been developing unique solutions by combining our innovations with digital dental technologies and CAD/CAM processes. Our goal has always been to enhance the potential of digital dentistry in order to expand and improve therapy and care for patients. Furthermore, we strive to enable our customers to improve drive efficiency and to add value.





”
OUR PROCESSES ARE SYNCED
PRECISELY FROM START TO FINISH.



Legal Issues



NT-Trading takes responsibility ...

NT, as an original manufacturer and distributor of high-quality medical products, opens patented solutions on original implants. The legal certainty with NT products is explained by attorney Dr. Karl-Heinz Schnieder, specialist attorney for medical law.

§ WHAT ADDED VALUE DO DENTISTS GET WHEN COMBINING CE-CERTIFIED PROSTHETIC COMPONENTS?

Those who adhere to the manufacturers' intended purpose can take full advantage of the treatment possibilities of new, flexible implant solutions in their office. The decisive factor is with which products the individual system components may be combined according to CE certification, the so-called intended purpose, of the respective manufacturers. It regulates whether and with which other products the implant part may be combined. If the combination is approved by the notified body

and bears the CE marking, it does not represent any legal risk for the user. This is the case for all NT implant components. In the event of damage, an expert opinion must prove that complications have only arisen due to the connection of implant and abutment element. Users will find the intended purpose in the Operating Instructions.

§ DOES THE LEGAL WARRANTY LAPSE AND WHO IS LIABLE IF IMPLANT COMPONENTS FROM DIFFERENT MANUFACTURERS ARE COMBINED?

No, the legal risk for the dentist is not greater if he combines parts from different manufacturers that are approved for this purpose. In principle, each manufacturer is liable for defects in his product. This also applies if the product is combined with other parts. If a provider recommends a combination that is not CE certification covered, he is liable for damages according to a ruling

of the Frankfurt Regional Court. The dentist is liable if he combines products contrary to the manufacturer's specifications or recommends a therapy measure to his patients that is not in accordance with the intended purpose and that damage is caused by this.

§ DOES THE LEGAL SITUATION OF A DENTIST CHANGE IF IMPLANT COMPONENTS FROM DIFFERENT MANUFACTURERS ARE USED IN COMBINATION?

The dentist always becomes a manufacturer when he combines individual components. It does not matter if they are from different manufacturers. That means, the dentist becomes a manufacturer, according to MPG, when he combines original implants with original abutments, as well as when he combines original implants

with NT abutments. It is therefore irrelevant whether the parts to be combined are all from one manufacturer or whether they come from several manufacturers. The only thing important is, that the respective products may be combined according to CE certification and intended use.

Lifetime Guarantee

NT-Trading lifetime guarantee for abutment products

GUARANTEED SAFETY FOR YOU AND YOUR PATIENT

Under our general terms of sales and delivery, we guarantee a perfect quality on our original nt-trading abutment components. Because of our high manufacturing and quality standards we can offer a warranty of 30 years on original nt-trading abutment components.

THE NT-TRADING WARRANTY CONTAINS

In case of a non-provisional prosthetic abutment component of nt-trading fails – nt-trading guarantees to replace that component with the same prosthetics abutment component of nt-trading for free.

IMPLANT WARRANTY

Additionally nt-trading assumes an implant warranty of 30 years, but at maximum the one stated by the implant manufacturer.

FOR WHICH IMPLANTS DOES NT-TRADING ASSUMES A WARRANTY OF 30 YEARS?

For implants on which original non-provisional nt-trading prosthetic components were processed after healing and for which the implant manufacturer rejects warranty for the reason that the implant was combined with original nt-trading components.

In case of warranty we refund the proven material costs for a new implant replacement. Further claims like operation- and/or laboratory costs cannot be assumed. A warranty can only be covered with our contracting party/purchaser (dentist, dental clinic, laboratory). Other parties cannot claim any rights of the warranty. The warranty claims cannot be assigned.

IN WHICH CASE WILL A WARRANTY NOT BE ASSUMED?

- immediate restoration
- damage of our nt-trading abutment components or the implant due to external influences such force, accident, or non-professional treatment
- faulty material or manufacturing defects of the implant
- failure of our nt-trading abutment components or of the implant due to contraindications of the patient or due to alcoholism, smoking, drug consume or diabetes
- products, which have been custom-made or have been modified on the customer's request

Dirk Jahn, MDT, M.Sc.
Managing Director

Christoph Röer
Managing Director

